



**Specification Sheet**  
**Part # HDL-G3F-XXW-XXK**  
 Generation 3 Flood Light

PROJECT NAME	
CATALOG #	
NOTES	
FIXTURE TYPE	

**Product Description**

How Digital's third generation high output flood light produces up to 178 lumens per Watt. The die-cast aluminum heat sink provides a high degree of thermal stability, ensuring reliable operation between -40°F and 122°F. Rugged and durable construction ensure years of hassle-free use with minimal maintenance required. Optional visor, laser sight, safety handle, tempered glass and driver box allow for installation in a variety of environments for a myriad of applications. With possible dual driver configurations and an IP66 rating, there isn't much this fixture can't handle. All How Digital products come standard with the latest in high efficacy LED chips and carry a 5-year product warranty.



**Part numbers and Specifications**

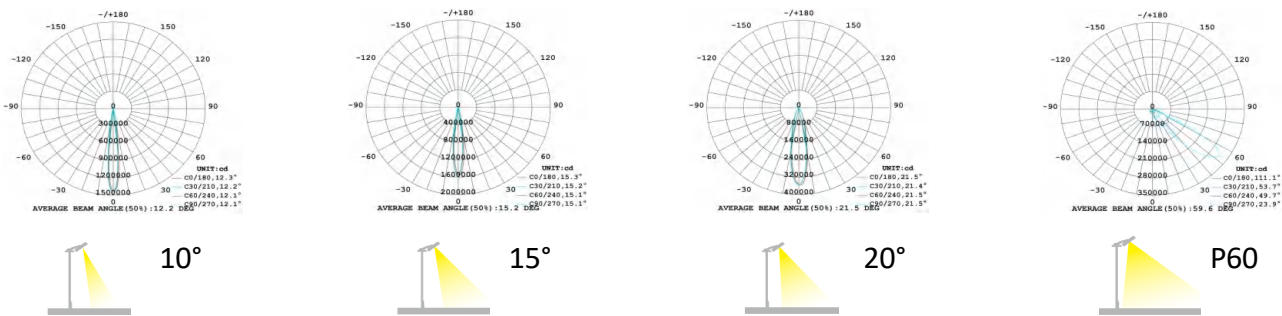
Model	Watts	CCT	CRI	lm/W	Luminous Flux	Voltage	Net Weight
HDL-G3F-600W-XXK	600W	3000°k 4000°k 5000°k 5700°k 6500°k	70 80 90	178	106,800 lm	100-277V or 277-480V	42 lbs (without driver, visor and glass)
HDL-G3F-800W-XXK	800W			175	140,000 lm		
HDL-G3F-1000W-XXK	1000W			165	165,000 lm		
HDL-G3F-1200W-XXK	1200W			155	186,000 lm		
HDL-G3F-1500W-XXK	1500W			152	288,000 lm		
HDL-G3F-1650W-XXK	1650W			150	247,500 lm		
HDL-G3F-1800W-XXK	1800W			145	261,000 lm		

- Controls Options: 0-10V, DMX512, DALI, RGB / RGBW
  - Mounting Options: Pole, Bracket, Distribution Box
  - Limited Warranty: 5 years
- For additional warranty information visit [www.howd.com](http://www.howd.com)

Remote driver mounts on pole, fixture or bracket



**Light Distribution**



## Part # HDL-G3F-XXW-XXK

Generation 3 Flood Light



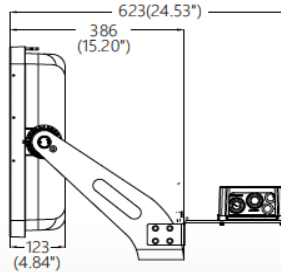
**How Digital**  
Specification Sheet

### Applications

- Sports Facilities
- Stadiums & Concert Venues
- Amusement Parks
- College Campuses
- Auto Dealerships
- Ports & Shipyards
- Outdoor Walkways
- Building Exteriors

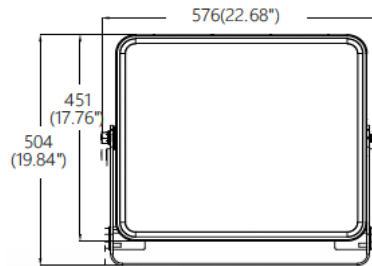


### Dimensions (in millimeters)



### Product Specifications

- Up to 178 lumens per Watt
- Die Cast Heat Sink
- Sheet Metal Bracket (360° Stepless Adjustable)
- Simple Installation
- Gray Color
- Glass or Polycarbonate Lens
- Operating Temperature: -40°F to 122°F
- >50,000 Lifetime Hours
- 5-Year Product Warranty



### Electrical System

- Input Voltage: 100-277V AC
- Also available in 277-480V
- Power Factor  $\geq 95\%$
- THD  $\leq 15\%$  at Full Load
- < 1% Flicker

### Accessories



Visor



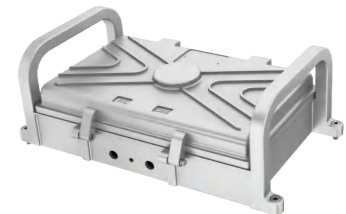
Laser Sight

### Test and Certifications

- CE
- RoHS
- CNEC
- Class I
- IP66
- IK08 (IK10 Optional)
- 10 KV Surge Protection (20 KV Optional)



Handle



Driver Box